



SEPARATING PEOPLE FROM HAZARDS

A full-page background image showing an oil and gas worker in the foreground. The worker is wearing a white hard hat, large black safety glasses, and orange earplugs. They are dressed in an orange high-visibility safety suit. In the background, there is industrial equipment, including a large yellow vertical pipe and a red and white striped safety marker. The scene is brightly lit, suggesting an outdoor or well-lit industrial environment.

# Safety Solutions for **Oil and Gas Sector**

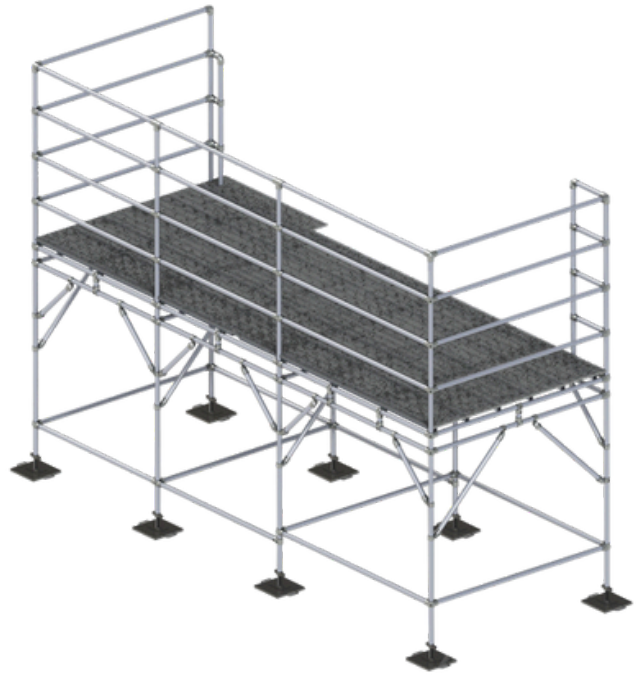
KEEP YOUR TEAM SAFE FROM HAZARDS

**In the high-stakes world of oil and gas, safety is paramount. Our innovative safety solutions are designed to protect your workforce, assets, and the environment, ensuring your operations run smoothly and efficiently.**

# Kee Platform<sup>®</sup>

## FLEXIBLE, DURABLE, AND EFFECTIVE.

Kee Platform work platform use Kee Lite or Kee Klamp tubular fittings to construct platforms to suit any application. Static work platforms are flexible, durable and effectively protect workers from the hazards of slipping and falling when working at height.



### Lightweight

Available in lightweight aluminum when being built for rooftop applications.



### Ease of Use

Modular design for fast, easy assembly. Preassembly is available.



### In Stock Materials

Manufactured using stock items provides shorter lead times

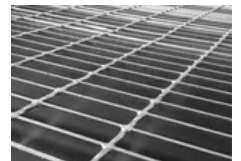


### OH&A Compliant

Compliant with OH&A work stand safety standards.

## Design Options

- **Decking:** High-grade nylon treads, aluminum or fibreglass grating.
- **Base Feet:** Non-penetrating, penetrating or adjustable.
- **Bespoke Options:** Variable heights and lengths available to suit project requirements.



# Professionally Delivered and Installed

Each of our platforms is designed to suit a specific application and is built in accordance with all safety standards. If the platform design needs to be modified to fit a different function, Kee Safety can easily reengineer the existing platform to meet new requirements.



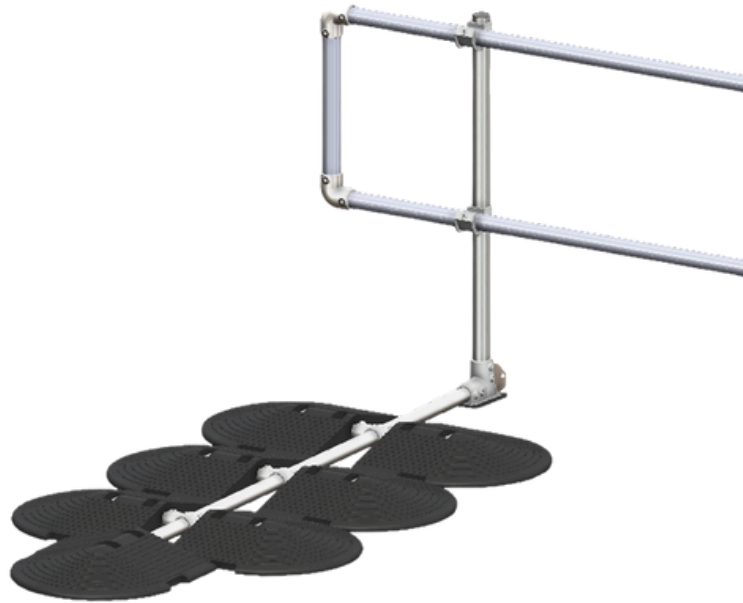
## Benefits

- ▶ Excellent strength and corrosion resistance
- ▶ Custom designed platform
- ▶ Short delivery lead times
- ▶ Minimal on-site disruption
- ▶ Safety assured when used correctly

# Kee Guard®

## NON-PENETRATING GUARDRAIL

Kee Guard non-penetrating guardrail is the industry's leading modular, free-standing safety railing system, which is not fixed directly to the surface. OH&S compliant and appropriate for almost any flat roof up to a 5° slope. – keeping your workforce safe.



### Versatile

Can be used on everything from complex roof shapes to those that change in elevation



### Easy to Install

To assemble it, you will need a torque wrench or hex key, making it incredibly easy to install.



### In Stock Materials

Manufactured using stock items provides shorter lead times



### OH&A Compliant

Compliant with OH&A work stand safety standards.

## Design Options



FOR NARROW SPACES



FOR METAL ROOFS

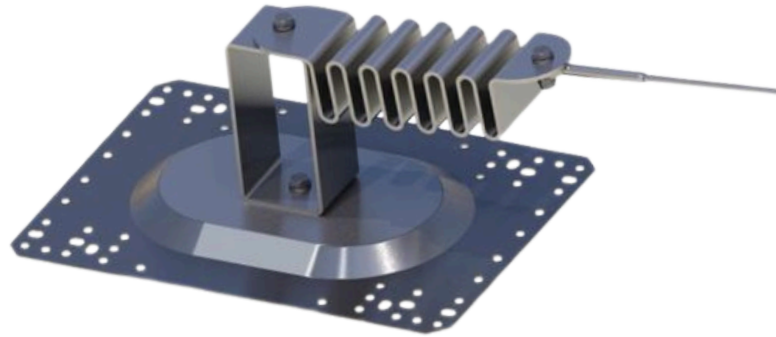


FOR LADDER ACCESS

# KeeLine®

## ENERGY ABSORBING LIFELINE SYSTEM

Freedom to Work. Securely Attached. The Kee Line horizontal lifeline system is designed to provide workers with freedom of movement while securely attached to the lifeline at all times.



### Corrosion Resistant

A combination of galvanized and stainless steel components ensure longevity.



### Third Party Testing

We test internally and verify externally to maximize peace of mind.



### Maximum Spans

Maximum span of 39' allows 3 users at one time.



### Qualified Installers

Kee Safety requires that Kee Line be installed by trained and certified installers.

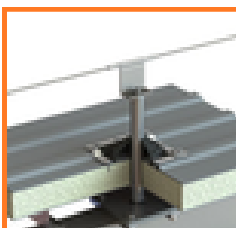
## Design Options



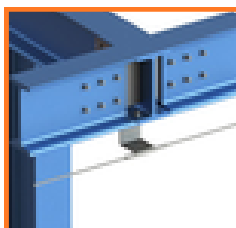
MEMBRANE



METAL SHEET



STRUCTURAL



OVERHEAD



STRUCTURES



NON-PENETRATING



# FLEXIBILITY OF APPLICATION



**COMPRESSOR STATION**



**WELL SITE**



**METERING STATION**



**OIL REFINERY PLANT**



**Head Office  
Ontario**

40 North Rivermede Road,  
Units 6 - 7 Concord,  
Ontario L4K 2H3

**Regional Office**

**Alberta Office**

440-10816 Macleod Trail SE #148  
Calgary, Alberta T2J 5N8

**Québec Office**

118 - 6185 boul. Taschereau  
local 180 Brossard, Québec J4Z 0E4

**Tel:**

(905) 669 1494

**Toll Free:**

(877) 505 5003

**Web:**

[www.keesafety.ca](http://www.keesafety.ca)

Kee Klamp, Kee Lite, Kee Stainless, Kee Guard, Kee Dome, Kee Hatch, Kee Mark, Kee Access, Kee Kwik, Kee Anchor, Kee Line, Kee Walk and Kee Projects are all registered trademarks of Kee Safety Ltd. Beam Clamp, and Box Bolt are all registered trademarks of Access Technologies Ltd, a subsidiary of Kee Safety International Ltd. While every effort has been made to ensure the accuracy of the information contained in this brochure, Kee Safety, Inc cannot be held responsible for any errors or omissions. Kee Safety, Inc reserves the right to alter or withdraw products without prior notice. Kee Safety, Inc does not accept responsibility for any loss or damage arising from improper use of its products.