

Benefits of a Rooftop Safety Audit with Kee Safety

- We provide you with a detailed action plan, prioritizing the areas deemed as “critical”
- Our experts create a customized solution that fits the exact needs of your facility
- Kee Safety fully documents your fall protection requirements for presentation to your peers, upper management, or budget approval board
 - Organizes your budget requests
 - Presents a coordinated plan to inspectors
- Only Kee Safety offers a solution-designed proposal using products that:
 - Will not puncture your roof, cause roof leaks, or void your roof warranty
 - Are third-party tested to meet all Provincial Standards and Territorial Codes
 - Are extremely long-lasting (20-30 year life expectancy)
 - Many products can be easily installed by your crew or local contractor



SEPARATING PEOPLE FROM HAZARDS

Rooftop Safety Audit

Installation

You can rely on Kee Safety and our worldwide network of certified installers to ensure compliance with all major standards and regulatory requirements. Our dedicated technical service team can provide a turn-key solution including on-site analysis, professional installation, advise on project costs and manage deadlines.

Kee Safety: Your Fall Protection Experts



Kee Safety is the leading expert and global manufacturer of safety and fall protection systems. We are fully committed to Separating People from Hazards.

Established in Canada in 1956, Kee Safety, Ltd. has a proud history of supplying fall protection equipment that exceeds safety standards, providing world-class customer service, and leading the industry in new product development.

Please contact one of our qualified Fall Protection Experts and schedule a rooftop safety assessment today!



Canada
Kee Safety, Ltd.
40 North Rivermede Road, Units 6 - 7
Concord, Ontario L4K 2H3
Tel: (905) 669 1494
Fax: (905) 669 4347
Toll Free: (877) 505 5003

www.keesafety.ca

USA
Kee Safety, Inc.
100 Stradtman Street
Buffalo, NY 14206
Tel: (716) 896 4949
Fax: (716) 896 5696
Toll Free: (800) 851 5181

www.keesafety.com
Email: info@keesafety.com

Kee Klamp, Kee Lite, Kee Stainless, KeeGuard, Kee Dome, Kee Hatch, Kee Mark, Kee Access, Kwik Kit, Kee Anchor, Weightanka, Wireanka, KeeLine, Kee Walk and Kee Projects are all registered trademarks of Kee Safety Ltd. Beam Clamp, and Box Bolt are all registered trademarks of Access Technologies Ltd, a subsidiary of Kee Safety International Ltd. While every effort has been made to ensure the accuracy of the information contained in this brochure, Kee Safety, Inc cannot be held responsible for any errors or omissions. Kee Safety, Inc reserves the right to alter or withdraw products without prior notice. Kee Safety, Inc does not accept responsibility for any loss or damage arising from improper use of its products.
Copyright 2018 Kee Safety, Inc. All Rights Reserved.



- WORK WITH OUR EXPERTS TO PERFORM A ROOFTOP SAFETY AUDIT
- RECOGNIZE HAZARDS THAT EXIST ON YOUR ROOF
- LEARN ABOUT KEE SAFETY SYSTEMS THAT PREVENT THE RISK OF FALL
- IMPROVE WORKER SAFETY WITH SOLUTIONS THAT EXCEED OH&S COMPLIANCE



August 2018



How do We Assess a Risk on Your Rooftop?

As fall protection experts we perform a critical analysis on your rooftop to identify the hazards where your workers are exposed to the greatest risk. This ensures that the most dangerous areas are protected immediately with state-of-the-art systems and OH&S compliant solutions.

To do this we assess risks based on two factors:

- 1. Severity of Injury:** In fall protection assessment, the severity of a fall must always be assumed as life-threatening.
- 2. Likelihood of an Accident Occurring:** The greatest predictor for the likelihood of an accident occurring is to review the **frequency** of exposure to the hazard.

Therefore, we prioritize our approach based on the critical danger exposure and how **frequently** each hazard is accessed by your workers. Outlined here is our basic approach. Your roof must be reviewed with one of our Kee Safety professionals as each site is unique and your specific roof may require variable solutions.

1

Access Points

Access points are the most frequented hazard on any roof. Your workers are exposed to this risk twice every time they enter and exit to perform tasks. For example, if your worker is required to access the roof 8 times per year, they are exposed to the access hazard 16 times. OH&S requires that all ladders and hatches be secured with a self-closing gate and safety-compliant railing.

2

Rooftop Openings

Openings are often overlooked, but extremely critical to protect. OH&S considers skylights to be a hole or an opening in the roof. A worker traversing the middle of the roof has a false sense of security when working far from the roof edge. If workers are carrying equipment, or focused on the job at hand, it is easy to misstep and fall through an opening. Statistically, more people fall through skylights than over the edge of the roof, which is why Kee Safety evaluates all rooftop openings as a serious risk concern.

3

Unprotected Edges

The edge of the roof is the most visible hazard, and typically the hazard most people want to protect first. Proximity to the roof edge is a significant factor in identifying the probability of an accident occurring. **OH&S Code states that if a worker can be exposed to a fall, then they must be protected.** Frequently, a worker's purpose for accessing the roof is to service a piece of equipment. Is the equipment too close to an unprotected edge?

4

Obstacles

Understanding the path your workers take across the roof is necessary for a complete fall protection assessment. Obstacles on the roof force workers to unsafely climb over or step around the obstruction, often placing workers at risk by walking too close to the roof edge.



Rooftop Fall Protection: An Integrated Solution

When access to the entire roof is required, the safest, most comprehensive solution is a perimeter railing system that surrounds and protects all roof edges.

Kee Walk®

On a standing seam metal roof, or metal profile roof, a level walkway system provides a safe, anti-slip and level surface to avoid tripping over the seams, crowns and valleys.

KeeGuard® Skylight Screens

Skylights are considered a hole in the roof - an OH&S safety hazard. The unique construction and mounting design allow the KeeGuard Skylight Screen to be attached without penetration, maintaining the integrity of the roof and the skylight.

KeeGuard® Topfix

Dependable railing for all metal roof types provides safety at the highest level.

Kee Hatch®

A safety access and railing system designed for secure egress/ingress through a dedicated roof hatch. Railing protection supports safety when the hatch is open. Self-closing gate protects workers when entering and exiting the rooftop.

Kee Gate®

Provides permanent protection for any openings, ladder/stair access points, roof hatches and restricted areas, where access for roof maintenance is required.

Safe Access Platform [SAP]

When obstacles exist on the rooftop (piping, ventilation systems, partitions between buildings or level changes) SAPs can be custom designed to provide safe access over those hazards.

Kee Dome®

A free-standing, modular solution deployed around skylights, roof lights and dome lights, allowing access to rooftops without the hazard of falling through glazed areas.

KeeLine®

Horizontal safety lines provide continuous protection when working at heights. Our 39-foot system accommodates up to 3 users and can be mounted either directly onto the roof surface or on to the building structure.

Kee Anchor® Weightanka

A modular, dead-weight anchor fall prevention system, used with personal fall protection equipment, allows for safe freedom of movement around the roof space.

KeeGuard®

On a flat roof, a protected perimeter limits access to the leading edge. Installing a modular, free-standing railing system that does not penetrate the roof membrane provides a safe barrier to the roof edge.

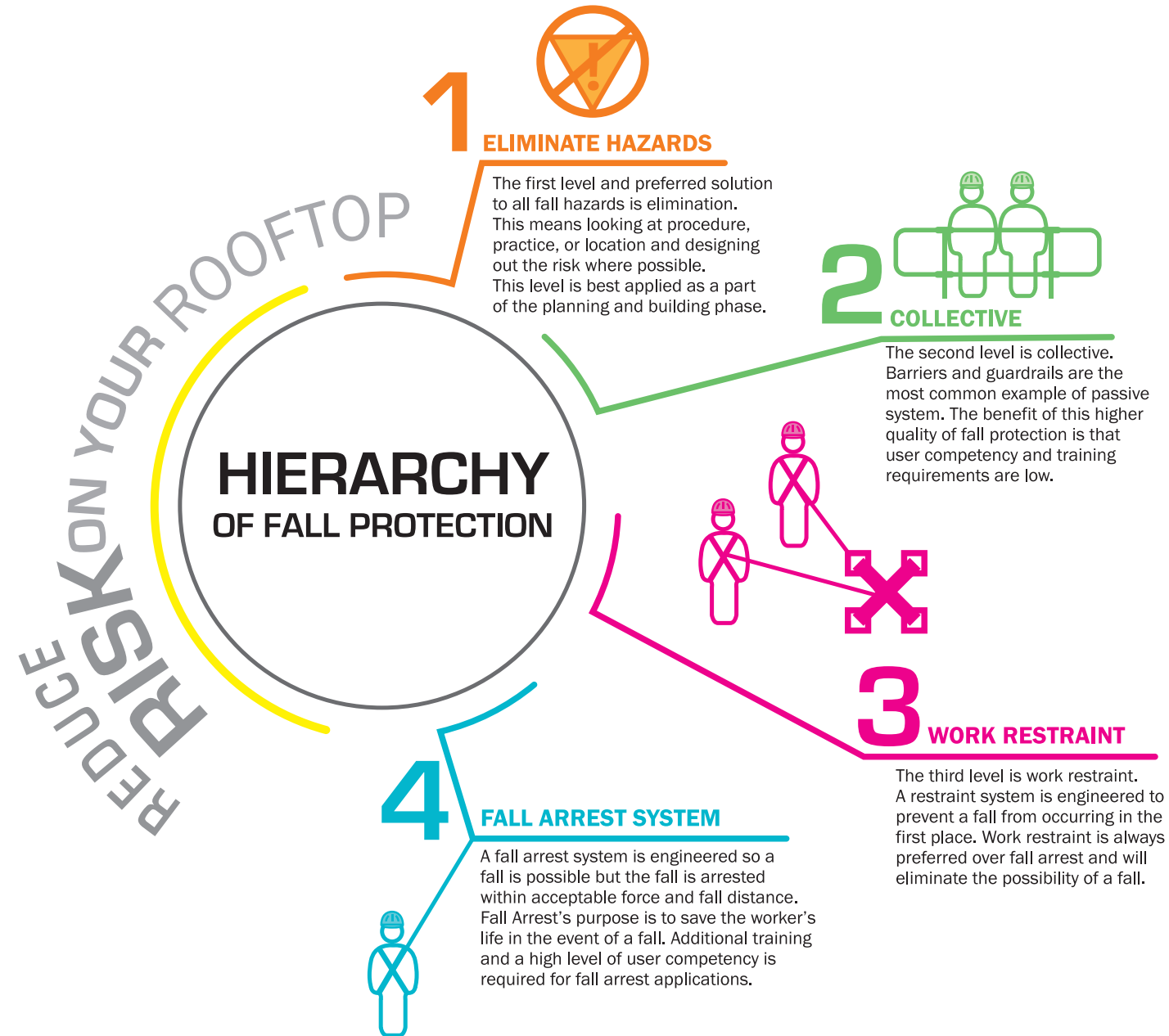
Training may be required for different safety systems. A railing system requires no specialized training; however, a horizontal lifeline system requires that users be properly trained to comply with OH&S and regional regulations.



Hierarchy of Fall Protection

It's About the Partnership: Depend on Kee Safety to Reduce Risk

You have a trusted partner in the field. Our experts walk the roof with you to assess the hazards, and discuss the best combination of products and systems to mitigate the risk of injury to your workers. Kee Safety, Ltd. uses the Hierarchy of Fall Protection to guide you in this process. Originated by Canadian OH&S regulations, the goal is to expertly evaluate, provide a comprehensive plan, and install a rooftop solution to successfully and safely separate people from hazards.



Occupational Health & Safety [OH&S] Industry Standards

OH&S standards have been updated to reflect industry fall protection requirements.

Canadian OH&S Fall Protection standards are central to the use of this Rooftop Safety Audit.

Discussions on roof safety can be overwhelming regarding OH&S regulations, inspections, and regional standards. Kee Safety can assist you with a full understanding of the OH&S codes that are applicable to your specific rooftop safety concerns.



Federally Regulated Companies OH&S (COSH)

<http://laws-lois.justice.gc.ca/eng/regulations/SOR-86-304/index.html>

Fall Protection Systems: Section 12.10

(1) Subject to subsection (1.1), every employer shall provide a fall-protection system to any person, other than an employee who is installing or removing a fall-protection system in accordance with the instructions referred to in subsection (5), who works:

(a) from an unguarded structure or on a vehicle, at a height of more than 2.4 m above the nearest permanent safe level or above any moving parts of machinery or any other surface or thing that could cause injury to a person on contact;

(b) from a temporary structure at a height of more than 6 m above a permanent safe level; or

(c) from a ladder at a height of more than 2.4 m above the nearest permanent safe level where, because of the nature of the work, that person is unable to use at least one hand to hold onto the ladder.

Guardrails: Section 2.12

(1) Every guardrail shall be highly visible and consist of

(a) a horizontal top rail not less than 900 mm but not more than 1100 mm above the base of the guardrail;

(b) a horizontal intermediate rail spaced midway between the top rail and the base; and

(c) supporting posts spaced not more than 3 m apart at their centres.

(2) Every guardrail shall be designed to withstand a static load of 890 N applied in any direction at any point on the top rail.

SOR/94-263, s. 8(F); SOR/2000-374, s. 2.

Guardrails and Toe Boards: Section 3.8

(1) Guardrails and toe boards shall be installed at every open edge of a platform of a temporary structure.

(2) The guardrails and toe boards referred to in subsection (1) shall meet the standards set out in sections 2.12 and 2.13.

SOR/2000-374, s. 3.

Alberta OH&S:

<https://www.alberta.ca/ohs-act-regulation-code.aspx>

British Columbia OH&S:

<https://www.worksafebc.com/en/law-policy/occupational-health-safety/searchable-ohs-regulation>

Ontario OH&S:

Section 26 at:

<https://www.ontario.ca/laws/regulation/910213?ga=2.133814734.113323616.1535557428-1022342276.1535557428#BK9>

Section 13, 36-38, 41 at:

<https://www.ontario.ca/laws/regulation/930067?ga=2.135068790.629770881.1531857049-156270655.1531857049#BK3>

Manitoba OH&S:

https://www.gov.mb.ca/labour/safety/pdf/1_2016_wsh_ar_oc.pdf

Quebec OH&S:

<http://www.legisquebec.gouv.qc.ca/en/showdoc/cr/S-2.1.%20r.%2013>

Newfoundland and Labrador OH&S:

<http://www.assembly.nl.ca/Legislation/sr/Regulations/rc120005.htm>

Prince Edward Island OH&S:

<http://www.wcb.pe.ca/Workplace/OHSActAndRegulations>

Northwest Territories OH&S:

<http://www.wscc.nt.ca/documents/occupational-health-and-safety-regulations-nwt>

Nova Scotia OH&S:

<http://www.worksafeforlife.ca/Home/About-Us/Occupational-Health-Safety>

Nunavut:

<https://www.canlii.org/en/nu/laws/regu/nu-reg-003-2016/latest/part-1/nu-reg-003-2016-part-1.pdf>

New Brunswick OH&S:

<http://laws.gnb.ca/en/ShowTdm/cs/O-0.2>

Saskatchewan OH&S:

<http://www.qp.gov.sk.ca/documents/english/regulations/regulations/o1-1r1.pdf>

Yukon OH&S:

<https://www.yukonregs.ca/RegsPublic>

Fall Protection: Section 10.11

Guardrails: Section 10.12

