

# Kee Post®

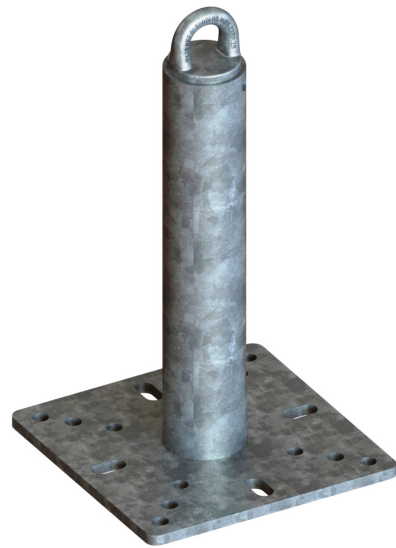
SAFETY AT THE HIGHEST LEVEL



## Rooftop Anchor Posts







## STANDARD OPTIONS, SHORT LEADTIMES

Ensure the safety for your maintenance personnel with Kee Post®, the premier rooftop tieback anchor manufactured in the USA.

Kee Post offers a straightforward solution for securing workers to the building's structure, enhancing safety during maintenance activities. Its modular design and flexibility cater to a broad spectrum of applications, from supporting suspended platforms to providing direct fall protection and integrating with horizontal lifelines.

### EXPECT THE BEST



#### Compliant

Kee Post meets and exceeds CSA, OSHA, and ANSI standards.



#### Reliable

Reliable construction - High quality American welds, galvanized to ASTM A123 and manufactured to ISO 9000 factory control system.



#### Options

Kee Post offers a variety of options - With a wide selection of heights and tops to accommodate different roof buildups.



#### Adjustable

Adjust when you need it - A wide range of connection methodologies through a standard plate.



#### Versatile

All standard surfaces - Steel, concrete, timber, whatever the roof type, our anchors will suit.



#### Engineered performance

No guessing or over-building - Our components are tested and proven to ensure performance in a wide range of applications.

### A VARIETY OF APPLICATIONS



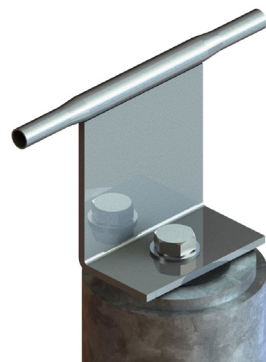
#### Tieback anchor

These anchors provide a secure attachment point for window washing and façade maintenance equipment.



#### Single point anchor

Single point anchors allow one user to safely tie off with the use of a lanyard or retractable fall protection device.



#### Lifeline anchor

Connect Kee Line® horizontal lifeline to provide continuous safety with productivity and mobility.

### ANCHOR POST OPTIONS

#### 1. COMPLIANCE



OSHA/ANSI/CSA  
OS



California OSHA  
CO

#### 2. HEIGHT



12"  
12



18"  
18



24"  
24

#### 3. TOP



U Bar  
UBG/UBS\*



Forged  
FRG

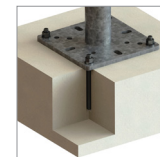


Tapped  
M12

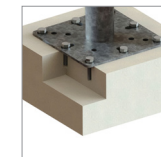


Swivel  
SVL

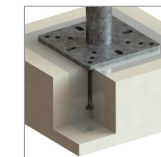
#### 4. BASE FIX



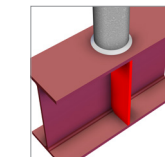
Epoxy  
EPX



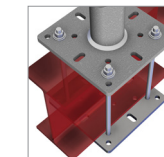
Shallow Deck  
SHD



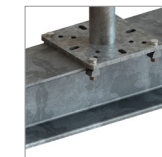
Cast-in  
CST



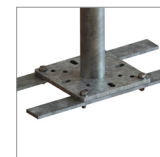
Weld on  
WON



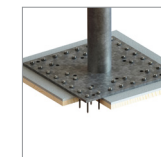
Wrap Around  
WAR



BeamClamp  
BCP



Bolted  
BLT

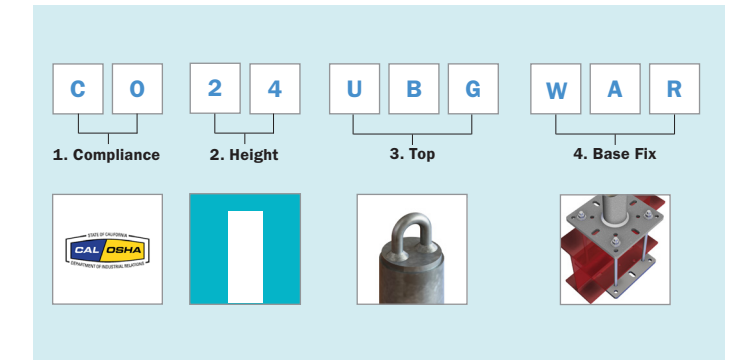


Screw in  
SCW

\* UBG = U Bar Galvanised  
UBS = U Bar Stainless

### Anchor Configuration Builder

The diagram below shows you how to build and order your anchor post using the SKU coding system.



In the example above a Cal/OSHA 24" Galvanized U-bar Wrap Around Base would dictate a part number: **CO24UBGWAR**

### COMPLIANCE ASSURED

Kee Safety's dedication to superior safety and reliability is embodied in Kee Post, thanks to our meticulous design and testing regimen. Our in-house team of structural engineers leverages cutting-edge techniques within our advanced testing facility to ensure Kee Post meets and exceeds CSA, OSHA, and ANSI standards.

- CSA Z259.15
- OSHA 1926.502
- ANSI Z359.18
- Cal-OSHA Title 8 3291 (for Cal-OSHA Range)



## Protects the environment and your bottom line

The incorporation of polyurethane insulation within each Kee Post upright offers several significant benefits:



**Enhances Building Efficiency** - The insulation provided by Kee Post acts as an effective barrier against heat transfer, minimizing heat loss to maintain a stable interior temperature. This improvement in thermal regulation contributes significantly to the building's overall efficiency and energy savings.



**Minimized Environmental Impact** - Kee Post is engineered not just for your safety, but with the environment in mind. Its optimized design and efficient supply chain ensure a smaller carbon footprint than many of the other rooftop tieback anchors in the market.



### Canada

Kee Safety, Ltd.  
40 North Rivermede Road, Units 6 - 7  
Concord, Ontario L4K 2H3

**Tel:** (905) 669 1494  
**Fax:** (905) 669 4347  
**Toll Free:** (877) 505 5003

[www.keesafety.ca](http://www.keesafety.ca)